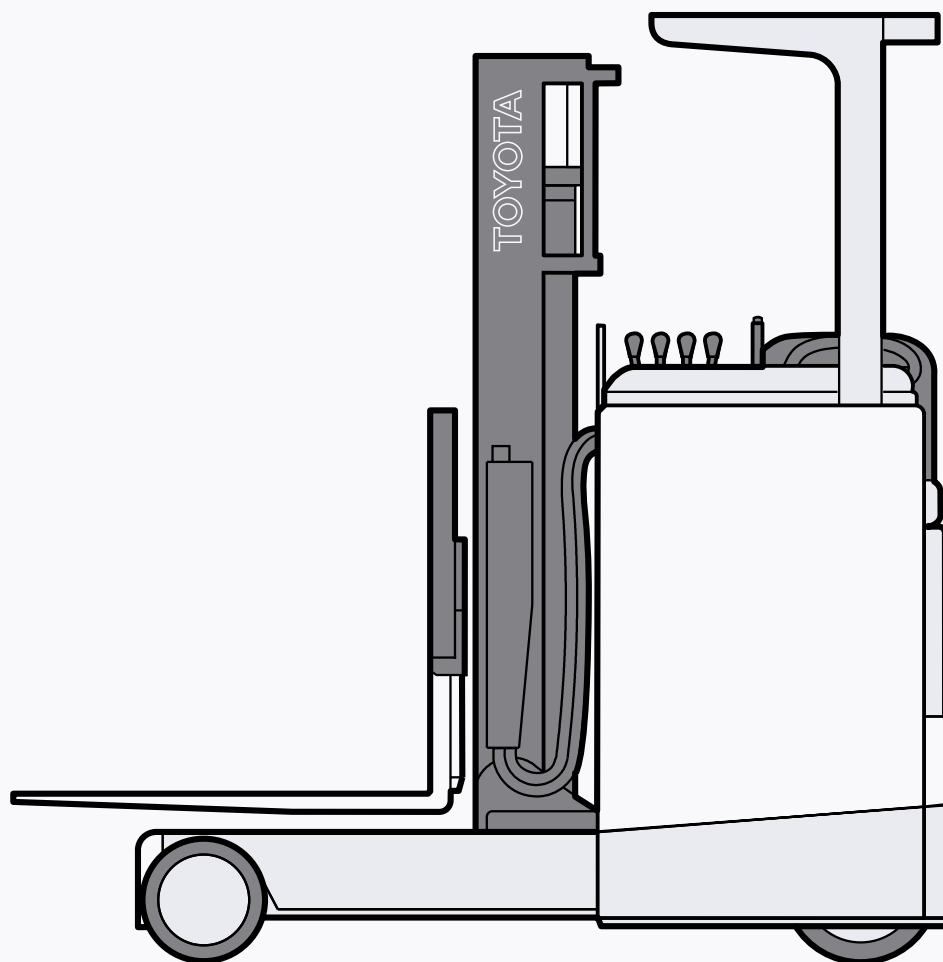


Reach Truck 6FBRE

1.2 to 2.0 tonne
Series



1,200 kg

MAIN VEHICLE SPECIFICATIONS

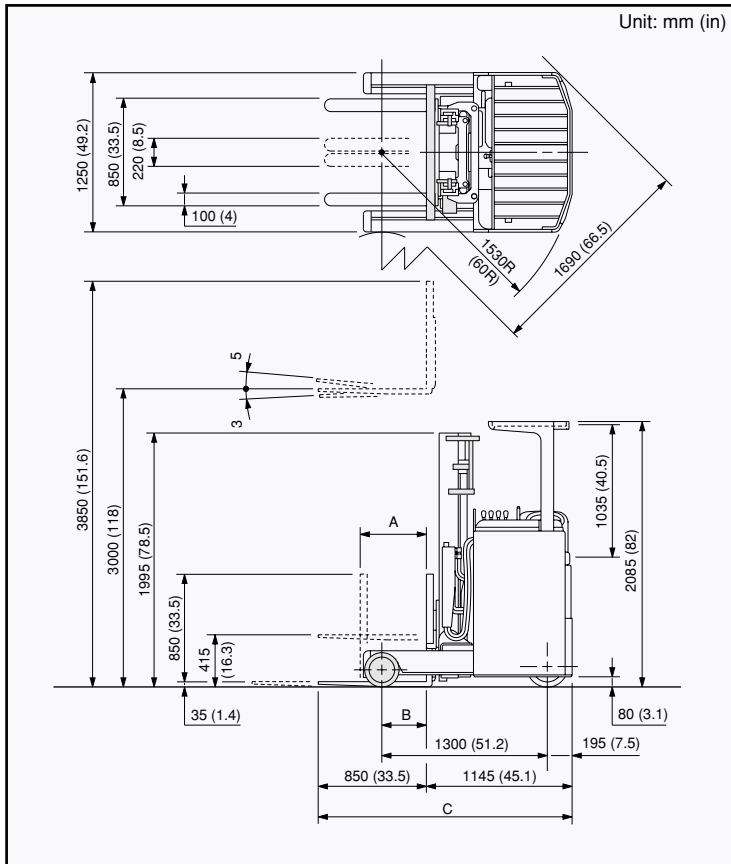
Characteristics	1	Manufacturer			TOYOTA	1	
	2	Model			6FBRE12	2	
	3	Load Capacity		kg (lb)	1200 (2650)	3	
	4	Load Center		mm (in)	600 (24)	4	
	5	Power Type			Battery	5	
	6	Operator Position			Rider Seated	6	
	7	Tire Type	Front/Rear			Cushion	7
	8	Wheels (x = driven)	Front/Rear			2/1x	8
Dimensions	9	Maximum Fork Height (MFH)		mm (in)	3000 (118)	9	
	10	Free Lift		mm (in)	415 (16.3)	10	
	13	Fork Size	T x W x L	mm (in)	35x100x850 (1.4x4x33.5)	13	
	14	Tilt Range	Up/Down	deg	5/3	14	
	15	Length to Fork Face		mm (in)	1145 (45.1)	15	
	16	Width Between Reach Legs		mm (in)	910 (35.8) [1110 (43.7)]	16	
	16	Overall Width		mm (in)	1250 (49.2) [1435 (56.5)]	16	
	17	Mast Lowered Height		mm (in)	1995 (78.5)	17	
	18	Mast Extended Height		mm (in)	3850 (151.6)	18	
	19	Overhead Guard Height		mm (in)	2085 (82)	19	
	21	Turning Radius (Outside)		mm (in)	1530 (60)	21	
	22	Load Distance (Centerline of front axle to front face of forks)		mm (in)	350 (13.8)	22	
		Right Angle Stacking Aisle Width * (With pallets 1200x800/1000x1200 [LxW])		mm (in)	2380/2180 (93.5/86)		
	Intersecting Aisle Width		mm (in)	1690 (66.5)			
Performance	24	Speeds	Travel, Max. (FWD/RVS)	Full Load	km/h (mph)	9 (5.6)	24
	No Load			km/h (mph)	10 (6.2)		
	25	Lifting	Full Load	mm/sec (fpm)	310 (61)	25	
	No Load			mm/sec (fpm)	500 (98)		
	26	Lowering	Full Load	mm/sec (fpm)	470 (93)	26	
	No Load			mm/sec (fpm)	550 (108)		
	27	Traction	Full Load/ No Load	3-Minute Ratings	kg (lb)	410/430 (900/950)	27
	5-Minute Ratings			kg (lb)	320/340 (710/750)		
	60-Minute Ratings			kg (lb)	120/130 (260/290)		
29	Gradeability **	Full Load/ No Load	3-Minute Ratings	% (tan)	11/17	29	
5-Minute Ratings			% (tan)	8/13			
30-Minute Ratings			% (tan)	3/6			
Weight	32	Total Weight	Without Battery and Case		kg (lb)	1850 (4080)	32
	33	Weight Distribution (With STD Battery)	Full Load (Full Reach)	Front	kg (lb)	3170 (6990)	33
	34			Rear	kg (lb)	620 (1370)	
	34		No Load (No Reach)	Front	kg (lb)	880 (1940)	34
	Rear			kg (lb)	1710 (3770)		
Wheels and Tires	35	Tires	Number	Front/Rear		2/1	35
	36			Front, Load		254x120 (10.2x4.7)	36
	37		Size	Rear, Drive		330x145 (13x5.7)	37
				Rear, Caster		—	
	38	Wheelbase		mm (in)	1300 (51.2)	38	
	39	Tread	Front	mm (in)	1130 (44.5)	39	
			Rear	mm (in)	—		
	40	Underclearance	Min. with Load		mm (in)	80 (3.1)	40
41	Center of Wheelbase		mm (in)	90 (3.5)	41		
42	Brake	Service (Foot)			Hydraulic	42	
43		Parking			Hand	43	
Drive Unit and Control	45	Battery	Voltage/Capacity (5-hour ratings)	STD	V/AH	48/360	45
	46			High	V/AH	48/420, 48/600	
	47	Weight with Case (STD Capacity Type)		kg (lb)	740 (1630)	47	
	48	Electric Motors	Drive	kW	3.4	48	
			Load Handling	kW	5.9		
			Power Steering	kW	0.29		
	54	Control Type	Drive			Transistor chopper (Micro computer)	54
	Load Handling			Transistor chopper (Micro computer)			
	Power Steering			Transistor chopper (Micro computer)			
57	Operating Pressure	For Attachments		kg/cm ² (psi)	125 (1750)	57	

NOTE: * Safety clearance of 200 mm (7.9 in) not included (general application).

** Computed values.

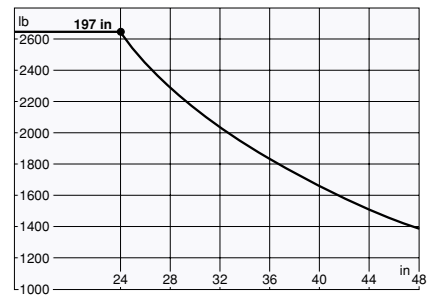
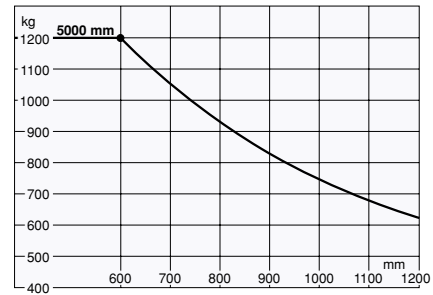
[] for Wide Flame model.

DIMENSIONAL DRAWINGS



Battery Capacity (AH/5HR)	A	B	C
360	520 (20.5)	350 (13.8)	1995 (78.5)
420	445 (17.5)	275 (10.8)	2070 (81.5)
600	375 (15)	205 (8.1)	2140 (84.5)

LOAD CAPACITY CHARTS



REACH LEGS HEIGHT mm (in)
 6FBRE12 274 (10.8)

UNDERCLEARANCE mm (in)
 Center of Wheelbase 90 (3.5)
 Rear Frame 80 (3.1)

MAST SPECIFICATIONS & RATED CAPACITIES

Mast Type	Maximum Fork Height	Overall Mast Height		Free Lift		Tilt Range		Load Capacity at 600 mm (24 in) LC			
		Lowered	Extended		Without Load Backrest	With Standard Load Backrest	Down	Up	Battery Capacity (AH)		
			Without Load Backrest	With Standard Load Backrest					360	420	600
mm (in)	mm (in)	mm (in)	mm (in)	mm (in)	mm (in)	deg	deg	kg (lb)	kg (lb)	kg (lb)	
Wide Visible Mast (SV)	3000 (118)	1995 (78.5)	—	3850 (151.5)	—	415 (16.3)	3	5	1200 (2650)	1200 (2650)	1200 (2650)
	3300 (130)	2145 (84.5)	—	4150 (163.5)	—	415 (16.3)	3	5	1200 (2650)	1200 (2650)	1200 (2650)
	3500 (138)	2245 (88.5)	—	4350 (171.5)	—	415 (16.3)	3	5	1200 (2650)	1200 (2650)	1200 (2650)
	3700 (145)	2345 (92.5)	—	4550 (179)	—	415 (16.3)	3	5	1200 (2650)	1200 (2650)	1200 (2650)
	4000 (157.5)	2495 (98)	—	4850 (191)	—	415 (16.3)	3	5	1200 (2650)	1200 (2650)	1200 (2650)
	4500 (177)	2845 (112)	—	5350 (210.5)	—	415 (16.3)	3	5	1200 (2650)	1200 (2650)	1200 (2650)
	5000 (197)	3095 (122)	—	5850 (230.5)	—	415 (16.3)	3	5	1200 (2650)	1200 (2650)	1200 (2650)
Wide Visible Full-Free Lift Three-Stage Mast (FSV)	4300 (169)	1995 (78.5)	—	5150 (203)	—	1145 (45)	3	5	1200 (2650)	1200 (2650)	1200 (2650)
	4700 (185)	2145 (84.5)	—	5550 (218.5)	—	1295 (51)	3	5	1200 (2650)	1200 (2650)	1200 (2650)
	5000 (197)	2245 (88.5)	—	5850 (230.5)	—	1395 (55)	3	5	1200 (2650)	1200 (2650)	1200 (2650)
	5500 (216.5)	2405 (94.5)	—	6350 (250)	—	1555 (61)	3	5	1200 (2650)	1200 (2650)	1200 (2650)
	6000 (236)	2595 (102)	—	6850 (269.5)	—	1745 (68.5)	3	5	1200 (2650)	1200 (2650)	1200 (2650)
	6500 (256)	2845 (112)	—	7350 (289.5)	—	1995 (78.5)	3	5	1050 (2310)	1200 (2650)	1200 (2650)
	7000 (275.5)	3095 (122)	—	7850 (309)	—	2245 (88.5)	3	5	900 (1980)	1050 (2310)	1200 (2650)
	7500 (295)	3345 (131.5)	—	8350 (328.5)	—	2495 (98)	3	5	700 (1540)	800 (1760)	1000 (2200)

NOTE: Height of standard load backrest is 850 mm (33.5 in).

1,350 kg

MAIN VEHICLE SPECIFICATIONS

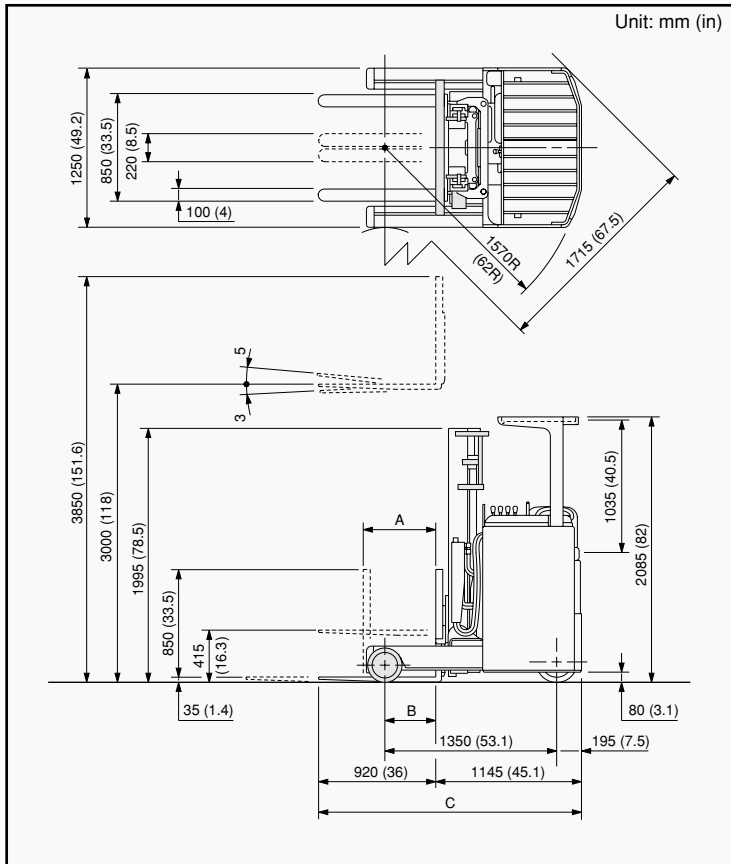
Characteristics	1	Manufacturer			TOYOTA	1	
	2	Model			6FBRE14	2	
	3	Load Capacity		kg (lb)	1350 (2980)	3	
	4	Load Center		mm (in)	600 (24)	4	
	5	Power Type			Battery	5	
	6	Operator Position			Rider Seated	6	
	7	Tire Type	Front/Rear			Cushion	7
	8	Wheels (x = driven)	Front/Rear			2/1x	8
Dimensions	9	Maximum Fork Height (MFH)		mm (in)	3000 (118)	9	
	10	Free Lift		mm (in)	415 (16.3)	10	
	13	Fork Size	T x W x L		mm (in)	35x100x920 (1.4x4x36)	13
	14	Tilt Range	Up/Down		deg	5/3	14
	15	Length to Fork Face		mm (in)	1145 (45.1)	15	
		Width Between Reach Legs		mm (in)	910 (35.8) [1110 (43.7)]		
	16	Overall Width		mm (in)	1250 (49.2) [1435 (56.5)]	16	
	17	Mast Lowered Height		mm (in)	1995 (78.5)	17	
	18	Mast Extended Height		mm (in)	3850 (151.6)	18	
	19	Overhead Guard Height		mm (in)	2085 (82)	19	
	21	Turning Radius (Outside)		mm (in)	1570 (62)	21	
	Performance	22	Load Distance (Centerline of front axle to front face of forks)		mm (in)	400 (15.7)	22
		Right Angle Stacking Aisle Width * (With pallets 1200x800/1000x1200 [LxW])		mm (in)	2370/2170 (93.5/85.5)		
		Intersecting Aisle Width		mm (in)	1715 (67.5)		
24		Speeds	Travel, Max. (FWD/RVS)	Full Load	km/h (mph)	9 (5.6)	24
				No Load	km/h (mph)	10 (6.2)	
25			Lifting	Full Load	mm/sec (fpm)	300 (59)	25
	No Load				mm/sec (fpm)	500 (98)	
26	Lowering		Full Load	mm/sec (fpm)	470 (93)	26	
				No Load	mm/sec (fpm)	550 (108)	
27	Traction	Full Load/ No Load	3-Minute Ratings	kg (lb)	590/610 (1300/1340)	27	
			5-Minute Ratings	kg (lb)	490/500 (1080/1100)		
			60-Minute Ratings	kg (lb)	190/210 (420/460)		
29	Gradeability **	Full Load/ No Load	3-Minute Ratings	% (tan)	15/24	29	
			5-Minute Ratings	% (tan)	12/20		
			30-Minute Ratings	% (tan)	6/10		
Weight	32	Total Weight		Without Battery and Case	kg (lb)	1870 (4120)	32
	33	Weight Distribution (With STD Battery)	Full Load (Full Reach)	Front	kg (lb)	3330 (7340)	33
				Rear	kg (lb)	630 (1390)	
			No Load (No Reach)	Front	kg (lb)	910 (2000)	34
Rear				kg (lb)	1700 (3750)		
Wheels and Tires	35	Tires	Number	Front/Rear		2/1	35
	36			Front, Load		254x120 (10.2x4.7)	36
	37		Size	Rear, Drive		330x145 (13x5.7)	37
				Rear, Caster		—	
	38	Wheelbase		mm (in)	1350 (53.1)	38	
	39	Tread	Front		mm (in)	1130 (44.5)	39
			Rear		mm (in)	—	
	40	Underclearance	Min. with Load		mm (in)	80 (3.1)	40
41	Center of Wheelbase		mm (in)	90 (3.5)	41		
42	Brake	Service (Foot)			Hydraulic	42	
43		Parking			Hand	43	
Drive Unit and Control	45	Battery	Voltage/Capacity (5-hour ratings)	STD	V/AH	48/360	45
				High	V/AH	48/420, 48/600	
	46	Weight with Case (STD Capacity Type)		kg (lb)	740 (1630)	46	
	47	Electric Motors	Drive		kW	4.3	47
			Load Handling		kW	8.0	48
			Power Steering		kW	0.29	
	54	Control Type	Drive			Transistor chopper (Micro computer)	54
Load Handling				Transistor chopper (Micro computer)			
Power Steering				Transistor chopper (Micro computer)			
57	Operating Pressure		For Attachments	kg/cm ² (psi)	170 (2400)	57	

NOTE: * Safety clearance of 200 mm (7.9 in) not included (general application).

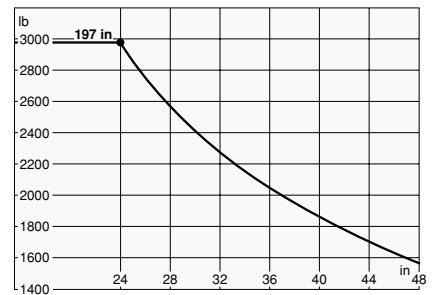
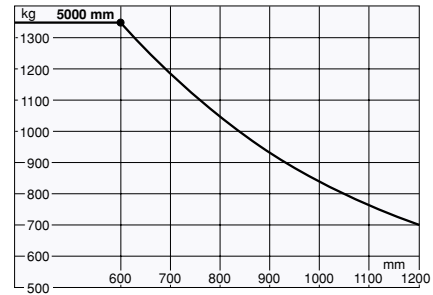
** Computed values.

[] for Wide Flame model.

DIMENSIONAL DRAWINGS



LOAD CAPACITY CHARTS



REACH LEGS HEIGHT mm (in)

6FBRE14 274 (10.8)

UNDERCLEARANCE mm (in)

Center of Wheelbase 90 (3.5)
Rear Frame 80 (3.1)

Battery Capacity (AH/5HR)	A	B	C
360	570 (22.5)	400 (15.7)	2065 (81.5)
420	495 (19.5)	325 (12.8)	2140 (84.5)
600	425 (16.5)	255 (10.0)	2210 (87)

MAST SPECIFICATIONS & RATED CAPACITIES

Mast Type	Maximum Fork Height	Overall Mast Height		Free Lift		Tilt Range		Load Capacity at 600 mm (24 in) LC			
		Lowered	Extended		Without Load Backrest	With Standard Load Backrest	Down	Up	Battery Capacity (AH)		
			Without Load Backrest	With Standard Load Backrest					360	420	600
mm (in)	mm (in)	mm (in)	mm (in)	mm (in)	mm (in)	deg	deg	kg (lb)	kg (lb)	kg (lb)	
Wide Visible Mast (SV)	3000 (118)	1995 (78.5)	—	3850 (151.5)	—	415 (16.3)	3	5	1350 (2980)	1350 (2980)	1350 (2980)
	3300 (130)	2145 (84.5)	—	4150 (163.5)	—	415 (16.3)	3	5	1350 (2980)	1350 (2980)	1350 (2980)
	3500 (138)	2245 (88.5)	—	4350 (171.5)	—	415 (16.3)	3	5	1350 (2980)	1350 (2980)	1350 (2980)
	3700 (145)	2345 (92.5)	—	4550 (179)	—	415 (16.3)	3	5	1350 (2980)	1350 (2980)	1350 (2980)
	4000 (157.5)	2495 (98)	—	4850 (191)	—	415 (16.3)	3	5	1350 (2980)	1350 (2980)	1350 (2980)
	4500 (177)	2845 (112)	—	5350 (210.5)	—	415 (16.3)	3	5	1350 (2980)	1350 (2980)	1350 (2980)
	5000 (197)	3095 (122)	—	5850 (230.5)	—	415 (16.3)	3	5	1350 (2980)	1350 (2980)	1350 (2980)
Wide Visible Full-Free Lift Three-Stage Mast (FSV)	4300 (169)	1995 (78.5)	—	5150 (203)	—	1145 (45)	3	5	1350 (2980)	1350 (2980)	1350 (2980)
	4700 (185)	2145 (84.5)	—	5550 (218.5)	—	1295 (51)	3	5	1350 (2980)	1350 (2980)	1350 (2980)
	5000 (197)	2245 (88.5)	—	5850 (230.5)	—	1395 (55)	3	5	1350 (2980)	1350 (2980)	1350 (2980)
	5500 (216.5)	2405 (94.5)	—	6350 (250)	—	1555 (61)	3	5	1350 (2980)	1350 (2980)	1350 (2980)
	6000 (236)	2595 (102)	—	6850 (269.5)	—	1745 (68.5)	3	5	1350 (2980)	1350 (2980)	1350 (2980)
	6500 (256)	2845 (112)	—	7350 (289.5)	—	1995 (78.5)	3	5	1350 (2980)	1350 (2980)	1350 (2980)
	7000 (275.5)	3095 (122)	—	7850 (309)	—	2245 (88.5)	3	5	1200 (2650)	1350 (2980)	1350 (2980)
	7500 (295)	3345 (131.5)	—	8350 (328.5)	—	2495 (98)	3	5	1050 (2310)	1250 (2760)	1350 (2980)
	8000 (315)	3595 (141.5)	—	8850 (348.4)	—	2745 (108)	3	5	—	1000 (2200)	1150 (2540)
	8500 (334)	3845 (151.5)	—	9350 (368)	—	2995 (118)	3	5	—	750 (1650)	900 (1980)

NOTE: Height of standard load backrest is 850 mm (33.5 in).

1,600 kg

MAIN VEHICLE SPECIFICATIONS

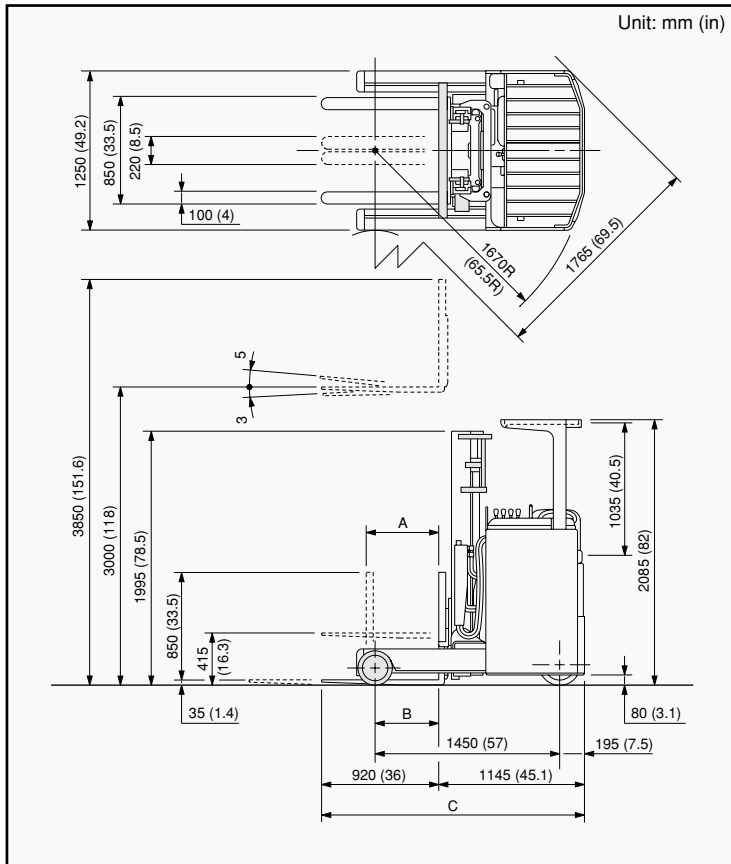
Characteristics	1	Manufacturer			TOYOTA	1	
	2	Model			6FBRE16	2	
	3	Load Capacity		kg (lb)	1600 (3530)	3	
	4	Load Center		mm (in)	600 (24)	4	
	5	Power Type			Battery	5	
	6	Operator Position			Rider Seated	6	
	7	Tire Type	Front/Rear			Cushion	7
	8	Wheels (x = driven)	Front/Rear			2/1x	8
Dimensions	9	Maximum Fork Height (MFH)		mm (in)	3000 (118)	9	
	10	Free Lift		mm (in)	415 (16.3)	10	
	13	Fork Size	T x W x L		mm (in)	35x100x920 (1.4x4x36)	13
	14	Tilt Range	Up/Down		deg	5/3	14
	15	Length to Fork Face		mm (in)	1145 (45.1)	15	
		Width Between Reach Legs		mm (in)	910 (35.8) [1110 (43.7)]		
	16	Overall Width		mm (in)	1250 (49.2) [1435 (56.5)]	16	
	17	Mast Lowered Height		mm (in)	1995 (78.5)	17	
	18	Mast Extended Height		mm (in)	3850 (151.6)	18	
	19	Overhead Guard Height		mm (in)	2085 (82)	19	
	21	Turning Radius (Outside)		mm (in)	1670 (65.5)	21	
	22	Load Distance (Centerline of front axle to front face of forks)		mm (in)	500 (19.7)	22	
		Right Angle Stacking Aisle Width * (With pallets 1200x800/1000x1200 [LxW])		mm (in)	2370/2170 (93.5/85.5)		
	Intersecting Aisle Width		mm (in)	1765 (69.5)			
Performance	24	Speeds	Travel, Max. (FWD/RVS)	Full Load	km/h (mph)	8.5 (5.3)	24
	No Load			km/h (mph)	10 (6.2)		
	25	Lifting	Full Load	mm/sec (fpm)	290 (57)	25	
	No Load			mm/sec (fpm)	500 (98)		
	26	Lowering	Full Load	mm/sec (fpm)	470 (93)	26	
	No Load			mm/sec (fpm)	550 (108)		
	27	Traction	Full Load/ No Load	3-Minute Ratings	kg (lb)	590/610 (1300/1340)	27
	5-Minute Ratings			kg (lb)	480/500 (1060/1100)		
	60-Minute Ratings			kg (lb)	190/210 (420/460)		
29	Gradeability **	Full Load/ No Load	3-Minute Ratings	% (tan)	13/23	29	
5-Minute Ratings			% (tan)	11/19			
30-Minute Ratings			% (tan)	5/9			
32	Total Weight	Without Battery and Case		kg (lb)	2010 (4430)	32	
33	Weight Distribution (With STD Battery)	Full Load (Full Reach)	Front	kg (lb)	3670 (8090)	33	
34			Rear	kg (lb)	680 (1500)		
		No Load (No Reach)	Front	kg (lb)	890 (1960)	34	
			Rear	kg (lb)	1860 (4100)		
35	Tires	Number	Front/Rear		2/1	35	
36			Size	Front, Load		254x120 (10x4.7)	36
37				Rear, Drive		330x145 (13x5.7)	37
				Rear, Caster		—	
38	Wheelbase		mm (in)	1450 (57)	38		
39	Tread	Front	mm (in)	1130 (44.5)	39		
		Rear	mm (in)	—			
40	Underclearance	Min. with Load		mm (in)	80 (3.1)	40	
41		Center of Wheelbase		mm (in)	90 (3.5)	41	
42	Brake	Service (Foot)			Hydraulic	42	
43		Parking			Hand	43	
Drive Unit and Control	45	Battery	Voltage/Capacity (5-hour ratings)	STD	V/AH	48/360	45
	46			High	V/AH	48/420, 48/600	
	47	Weight with Case (STD Capacity Type)		kg (lb)	740 (1630)	47	
	48	Electric Motors	Drive	kW	4.3	48	
			Load Handling	kW	8.0		
			Power Steering	kW	0.29		
	54	Control Type	Drive			Transistor chopper (Micro computer)	54
	Load Handling			Transistor chopper (Micro computer)			
	Power Steering			Transistor chopper (Micro computer)			
57	Operating Pressure	For Attachments		kg/cm ² (psi)	170 (2400)	57	

NOTE: * Safety clearance of 200 mm (7.9 in) not included (general application).

** Computed values.

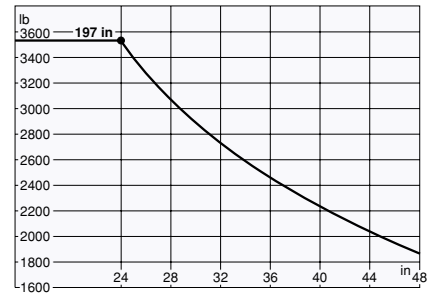
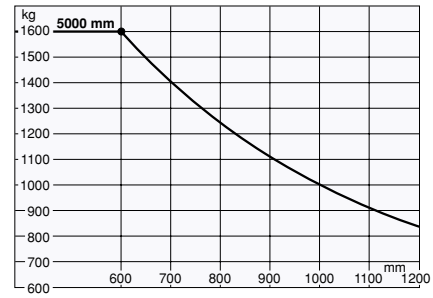
[] for Wide Flame model.

DIMENSIONAL DRAWINGS



Battery Capacity (AH/5HR)	A	B	C
360	670 (26.5)	500 (19.7)	2065 (81.5)
420	600 (23.5)	425 (16.7)	2140 (84.5)
600	525 (20.5)	355 (14.0)	2210 (87)

LOAD CAPACITY CHARTS



REACH LEGS HEIGHT mm (in)

6FBRE16 274 (10.8)

UNDERCLEARANCE mm (in)

Center of Wheelbase 90 (3.5)
 Rear Frame 80 (3.1)

MAST SPECIFICATIONS & RATED CAPACITIES

Mast Type	Maximum Fork Height	Overall Mast Height			Free Lift		Tilt Range		Load Capacity at 600 mm (24 in) LC		
		Lowered	Extended		Without Load Backrest	With Standard Load Backrest	Down	Up	Battery Capacity (AH)		
			Without Load Backrest	With Standard Load Backrest					360	420	600
		mm (in)	mm (in)	mm (in)	mm (in)	mm (in)	mm (in)	deg	deg	kg (lb)	kg (lb)
Wide Visible Mast (SV)	3000 (118)	1995 (78.5)	—	3850 (151.5)	—	415 (16.3)	3	5	1600 (3530)	1600 (3530)	1600 (3530)
	3300 (130)	2145 (84.5)	—	4150 (163.5)	—	415 (16.3)	3	5	1600 (3530)	1600 (3530)	1600 (3530)
	3500 (138)	2245 (88.5)	—	4350 (171.5)	—	415 (16.3)	3	5	1600 (3530)	1600 (3530)	1600 (3530)
	3700 (145)	2345 (92.5)	—	4550 (179)	—	415 (16.3)	3	5	1600 (3530)	1600 (3530)	1600 (3530)
	4000 (157.5)	2495 (98)	—	4850 (191)	—	415 (16.3)	3	5	1600 (3530)	1600 (3530)	1600 (3530)
	4500 (177)	2845 (112)	—	5350 (210.5)	—	415 (16.3)	3	5	1600 (3530)	1600 (3530)	1600 (3530)
5000 (197)	3095 (122)	—	5850 (230.5)	—	415 (16.3)	3	5	1600 (3530)	1600 (3530)	1600 (3530)	
Wide Visible Full-Free Lift Three-Stage Mast (FSV)	4300 (169)	1995 (78.5)	—	5150 (203)	—	1145 (45)	3	5	1600 (3530)	1600 (3530)	1600 (3530)
	4700 (185)	2145 (84.5)	—	5550 (218.5)	—	1295 (51)	3	5	1600 (3530)	1600 (3530)	1600 (3530)
	5000 (197)	2245 (88.5)	—	5850 (230.5)	—	1395 (55)	3	5	1600 (3530)	1600 (3530)	1600 (3530)
	5500 (216.5)	2405 (94.5)	—	6350 (250)	—	1555 (61)	3	5	1600 (3530)	1600 (3530)	1600 (3530)
	6000 (236)	2595 (102)	—	6850 (269.5)	—	1745 (68.5)	3	5	1500 (3310)	1600 (3530)	1600 (3530)
	6500 (256)	2845 (112)	—	7350 (289.5)	—	1995 (78.5)	3	5	1450 (3200)	1600 (3530)	1600 (3530)
	7000 (275.5)	3095 (122)	—	7850 (309)	—	2245 (88.5)	3	5	1300 (2870)	1450 (3200)	1600 (3530)
	7500 (295)	3345 (131.5)	—	8350 (328.5)	—	2495 (98)	3	5	1150 (2540)	1300 (2870)	1500 (3310)
	8000 (315)	3595 (141.5)	—	8850 (348.4)	—	2745 (108)	3	5	—	1100 (2430)	1250 (2760)
	8500 (334)	3845 (151.5)	—	9350 (368)	—	2995 (118)	3	5	—	850 (1870)	1000 (2200)

NOTE: Height of standard load backrest is 850 mm (33.5 in).

2,000 kg

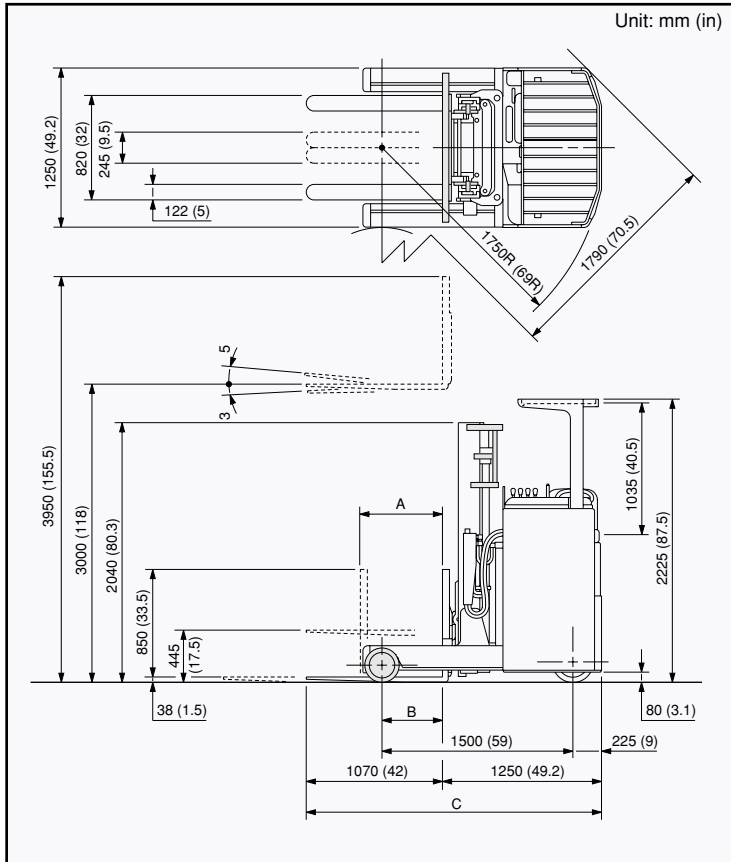
MAIN VEHICLE SPECIFICATIONS

Characteristics	1	Manufacturer			TOYOTA	1	
	2	Model			6FBRE20	2	
	3	Load Capacity		kg (lb)	2000 (4410)	3	
	4	Load Center		mm (in)	600 (24)	4	
	5	Power Type			Battery	5	
	6	Operator Position			Rider Seated	6	
	7	Tire Type	Front/Rear			Cushion	7
	8	Wheels (x = driven)	Front/Rear			2/1x	8
Dimensions	9	Maximum Fork Height (MFH)		mm (in)	3000 (118)	9	
	10	Free Lift		mm (in)	445 (17.5)	10	
	13	Fork Size	T x W x L		mm (in)	38x122x1070 (1.5x5x42)	13
	14	Tilt Range	Up/Down		deg	5/3	14
	15	Length to Fork Face		mm (in)	1250 (49.2)	15	
		Width Between Reach Legs		mm (in)	874 (34.4)		
	16	Overall Width		mm (in)	1250 (49.2)	16	
	17	Mast Lowered Height		mm (in)	2040 (80.3)	17	
	18	Mast Extended Height		mm (in)	3950 (155.5)	18	
	19	Overhead Guard Height		mm (in)	2225 (87.5)	19	
	21	Turning Radius (Outside)		mm (in)	1750 (69)	21	
	22	Load Distance (Centerline of front axle to front face of forks)		mm (in)	475 (18.5)	22	
		Right Angle Stacking Aisle Width * (With pallets 1200x800/1000x1200 [LxW])		mm (in)	2475/2275 (97.5/89.5)		
		Intersecting Aisle Width		mm (in)	1790 (70.5)		
Performance	24	Speeds	Travel, Max. (FWD/RVS)	Full Load	km/h (mph)	8.5 (5.3)	24
	No Load			km/h (mph)	10 (6.2)		
	25	Lifting		Full Load	mm/sec (fpm)	200 (39)	25
	No Load			mm/sec (fpm)	330 (65)		
	26	Lowering		Full Load	mm/sec (fpm)	480 (94)	26
	No Load			mm/sec (fpm)	350 (69)		
	27	Traction	Full Load/ No Load	3-Minute Ratings	kg (lb)	510/510 (1120/1120)	27
				5-Minute Ratings	kg (lb)	395/395 (870/870)	
				60-Minute Ratings	kg (lb)	170/180 (370/400)	
29	Gradeability **	Full Load/ No Load	3-Minute Ratings	% (tan)	9/15	29	
			5-Minute Ratings	% (tan)	7/12		
			30-Minute Ratings	% (tan)	5/8		
Weight	32	Total Weight		Without Battery and Case	kg (lb)	2370 (5230)	32
	33	Weight Distribution (With STD Battery)	Full Load (Full Reach)	Front	kg (lb)	4480 (9880)	33
				Rear	kg (lb)	820 (1810)	
	34		No Load (No Reach)	Front	kg (lb)	1070 (2360)	34
	Rear			kg (lb)	2230 (4920)		
Wheels and Tires	35	Tires	Number	Front/Rear		2/1	35
	36			Front, Load		267x127 (10.5x5)	36
	37		Size	Rear, Drive		384x152 (15.1x6)	37
				Rear, Caster		—	
	38	Wheelbase		mm (in)	1500 (59)	38	
	39	Tread	Front		mm (in)	1125 (44.3)	39
			Rear		mm (in)	—	
	40	Underclearance	Min. with Load		mm (in)	80 (3.1)	40
	41		Center of Wheelbase		mm (in)	90 (3.5)	41
42	Brake	Service (Foot)			Hydraulic	42	
43		Parking			Hand	43	
Drive Unit and Control	45	Battery	Voltage/Capacity (5-hour ratings)	STD	V/AH	48/420	45
				High	V/AH	48/600	
	46	Weight with Case (STD Capacity Type)		kg (lb)	930 (2050)	46	
	47	Electric Motors	Drive		kW	4.6	47
	48		Load Handling		kW	8.0	48
			Power Steering		kW	0.34	
	54	Control Type	Drive			Transistor chopper (Micro computer)	54
	Load Handling			Transistor chopper (Micro computer)			
	Power Steering			Transistor chopper (Micro computer)			
57	Operating Pressure		For Attachments	kg/cm ² (psi)	185 (2650)	57	

NOTE: * Safety clearance of 200 mm (7.9 in) not included (general application).

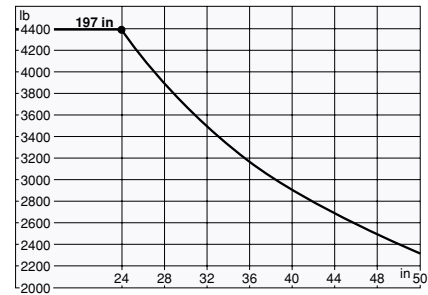
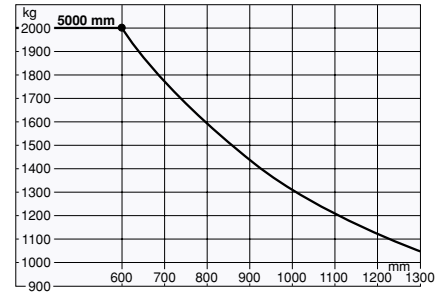
** Computed values.

DIMENSIONAL DRAWINGS



Battery Capacity (AH/5HR)	A	B	C
420	650 (25.5)	475 (18.5)	2320 (91)
600	580 (23)	405 (15.9)	2390 (94)

LOAD CAPACITY CHARTS



REACH LEGS HEIGHT mm (in)

6FBRE20 287 (11.3)

UNDERCLEARANCE mm (in)

Center of Wheelbase 90 (3.5)
Rear Frame 80 (3.1)

MAST SPECIFICATIONS & RATED CAPACITIES

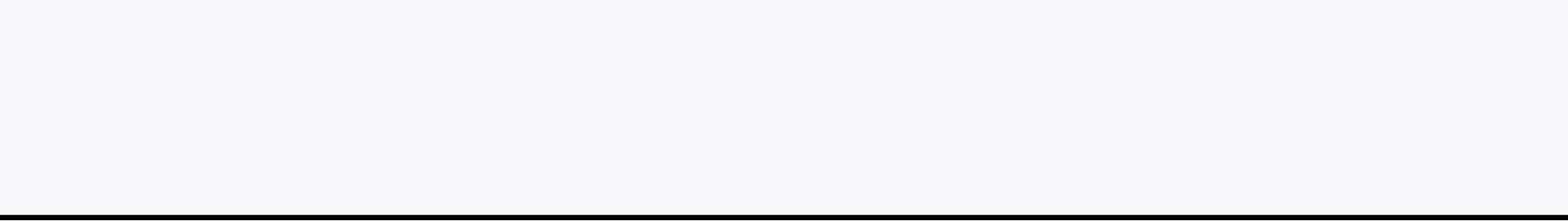
Mast Type	Maximum Fork Height	Overall Mast Height		Free Lift		Tilt Range		Load Capacity at 600 mm (24 in) LC		
		Lowered	Extended		Without Load Backrest	With Standard Load Backrest	Down	Up	Battery Capacity (AH)	
			Without Load Backrest	With Standard Load Backrest					420	600
mm (in)	mm (in)	mm (in)	mm (in)	mm (in)	mm (in)	deg	deg	kg (lb)	kg (lb)	
Wide Visible Mast (SV)	3000 (118)	2040 (80.5)	—	3950 (155.5)	—	445 (17.5)	3	5	2000 (4410)	2000 (4410)
	3300 (130)	2190 (86)	—	4250 (167.5)	—	445 (17.5)	3	5	2000 (4410)	2000 (4410)
	3500 (138)	2290 (90)	—	4450 (175)	—	445 (17.5)	3	5	2000 (4410)	2000 (4410)
	3700 (145)	2450 (96.5)	—	4650 (183)	—	445 (17.5)	3	5	2000 (4410)	2000 (4410)
	4000 (157.5)	2640 (104)	—	4950 (195)	—	445 (17.5)	3	5	2000 (4410)	2000 (4410)
	4500 (177)	2890 (113.5)	—	5450 (214.5)	—	445 (17.5)	3	5	2000 (4410)	2000 (4410)
	5000 (197)	3140 (123.5)	—	5950 (234)	—	445 (17.5)	3	5	2000 (4410)	2000 (4410)
Wide Visible Full-Free Lift Three-Stage Mast (FSV)	4300 (169)	1965 (77.5)	4845 (190.5)	5150 (203)	1420 (56)	1115 (44)	3	5	2000 (4410)	2000 (4410)
	4700 (185)	2115 (83)	5245 (206.5)	5550 (218.5)	1570 (62)	1265 (50)	3	5	2000 (4410)	2000 (4410)
	5000 (197)	2215 (87)	5545 (218.5)	5850 (230.5)	1670 (65.5)	1365 (53.5)	3	5	2000 (4410)	2000 (4410)
	5500 (216.5)	2375 (93.5)	6045 (238)	6350 (250)	1830 (72)	1525 (60)	3	5	2000 (4410)	2000 (4410)
	6000 (236)	2565 (101)	6545 (257.5)	6850 (269.5)	2020 (79.5)	1715 (67.5)	3	5	2000 (4410)	2000 (4410)
	6500 (256)	3065 (120.5)	7250 (285.5)	7350 (289.5)	2315 (91)	2215 (87)	3	5	1800 (3970)	2000 (4410)
	7000 (275.5)	3315 (130.5)	7750 (305)	7850 (309)	2565 (101)	2465 (97)	3	5	1600 (3530)	1800 (3970)
	7500 (295)	3565 (140.5)	8250 (325)	8350 (328.5)	2815 (111)	2715 (107)	3	5	1400 (3090)	1600 (3530)
	8000 (315)	3815 (150)	8750 (344.5)	8850 (348.5)	3065 (120.5)	2965 (116.5)	3	5	1200 (2650)	1350 (2980)
	8500 (334)	4165 (164)	9350 (368)	9350 (368)	3315 (130.5)	3315 (130.5)	3	5	950 (2090)	1100 (2430)

NOTE: Height of standard load backrest is 850 mm (33.5 in).

Standard Equipment

6FBRE12. 14. 16. 20

- Wide Visible Mast (SV) [MFH: 3000 mm (118 in)]
- Load backrest [Height: 850 mm (33.5 in)]
- Easy-down system (SV mast)
- Multi-function display
- Electric horn
- Hour meter
- Emergency unplug lever
- Storage box with cup holder
- Parking brake
- Electric power steering (EPS)
- Foot safety switch
- Arm pad
- Column cover
- Battery connector cable
- Battery tray
- Cooling fan for controller
- Hand protector
- Pen tray



Availability and specifications are determined regionally and are subject to change without notice.
Please consult your Toyota representative for details.



www.toyota-forklifts.co.uk

TMHUK020/MHP/6FBRE/1107