

reducing operating costs

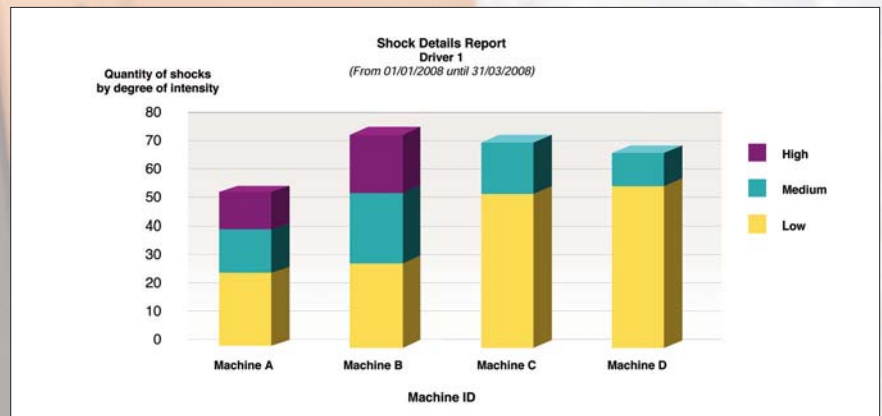
Reducing operating costs

Controlling damage costs can produce big savings in itself but reducing accidents can also improve machine availability and reduce operator time off work through injury. We also work with you to improve your battery management, which can improve battery life and reduce power consumption - all designed to reduce your operating costs but also deliver an environmental benefit.

▼ View of the intensity and the quantity of shocks

Date YYYYMMDD	Shock Time	X	Y	Login	Logout	Driver ID	Machine ID	Fleet No.	Machine Family	Model
20080208	13:18	74	77	13:18	13:18	741325	6768-966	6768-966	(Rider) Reach truck	RR B2E2
20080208	13:23	59	70	13:22	13:23	741325	6768-966	6768-966	(Rider) Reach truck	RR B2E2
20080208	13:26	20	30	13:26	13:27	741325	6768-966	6768-966	(Rider) Reach truck	RR B2E2
20080208	13:27	35	45	13:27	13:27	741325	6768-966	6768-966	(Rider) Reach truck	RR B2E2
20080208	13:28	37	48	13:28	13:28	741325	6768-966	6768-966	(Rider) Reach truck	RR B2E2
20080227	07:27	28	30	07:27	07:28	741325	6768-966	6768-966	(Rider) Reach truck	RR B2E2
20080227	07:28	26	25	07:28	07:29	741325	6768-966	6768-966	(Rider) Reach truck	RR B2E2
20080319	07:31	123	252	07:30	07:50	741325	6768-966	6768-966	(Rider) Reach truck	RR B2E2

▼ Shock details report



Main benefits

- › Identify if shocks are related to the material or to a specific driver
- › Information base for further improvement: driver trainings, review internal layout,...
- › Can help identify if a repair has been caused by a heavy shock
- › Help understanding if the shock was lateral or frontal
- › Reduce costs related to damages
- › Improve overall safety on site
- › Protect the load and end-customer satisfaction

features and benefits

Reducing operating costs

	Reducing operating costs	Improving safety	Increasing productivity
Expert analysis and feedback	●	●	●
Free up management time	●	●	●
Controlling access to machines	●	●	●
Remote access administration	●	●	●
Easier identification of training needs	●	●	●
Impact monitoring	●	●	●
Reduced accidents	●	●	●
Fewer personal injuries	●	●	●
Reduced damages	●	●	●
Identify machine damage costs	●		●
Monitor machine utilisation	●		●
Optimise fleet size and type	●		●
Optimise manpower requirements	●		●
Optimise service intervals	●		●
Improve "first fix" rate	●		●
Improved uptime	●		●
Improved battery management	●		●
Longer battery life	●		●
Reduced fuel and power consumption	●		●
No capital investment required	●		
Reduced administration	●		

The reports shown in this brochure are provided for illustration only and should not be regarded as contractual documentation. Different report configurations are possible for presenting data, based on your specific business needs. May 2020

TOYOTA

MATERIAL HANDLING

stronger together