

---

TECHNICAL DATA SHEET

**MT 1135**

**Manitou Telescopic**

---



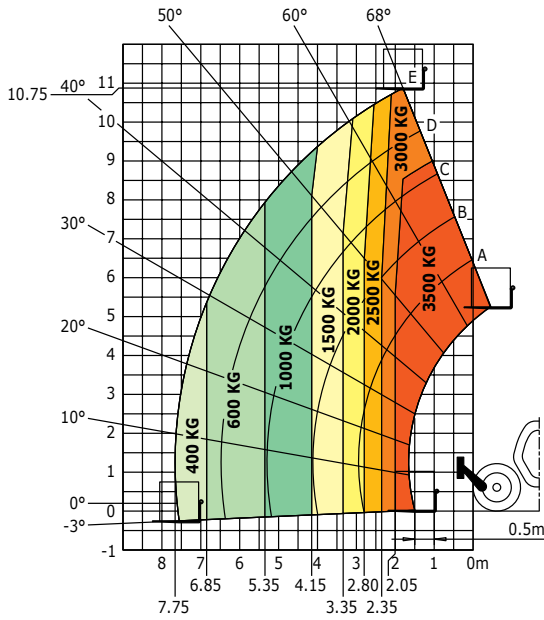
 **MANITOU**  
HANDLING YOUR WORLD

|   | MT 1135  |
|---|--|
| <b>Lifting</b>  |  |
| Max. capacity   | 3500 kg  |
| Max. lifting height   | 11.05 m  |
| Max. outreach   | 7.75 m   |
| Break-out-force with bucket (iso 8313)                              | 6400 daN   |
| <b>Unladen time</b>   |  |
| Lifting   | 8.5 s  |
| Lowering  | 7.0 s  |
| Extension   | 13.0 s   |
| Retraction  | 9.0 s  |
| Crowd   | 4.0 s  |
| Dump  | 4.0 s  |
| <b>Tyres</b>  | 400 / 80 -24   |
| <b>Braking</b>  |  |
| Service brake   | oil immersed multi-disc braking  |
| Parking brake   | automatic negative parking brake   |
| <b>Engine</b>   |  |
| PERKINS - STAGE 4 - FINAL TIER 4                                    |  |
| Type  | 854F-E34TA   |
| Power   | 100 HP / 75 kW   |
| Max torque  | 430 Nm   |
| Injection   | direct   |
| Cooling   | water  |
| Laden drawbar pull  | 9150 daN   |
| <b>Transmission</b>   |  |
| torque converter  |  |
| Reversing shift   | electrohydraulic control   |
| Number of gears (forward/reverse)                                   | 4/4  |
| Drive wheels  | 4 wheel drive  |
| Steering mode   | 4 wheel steer - 3 steering modes   |
| Max. travel speed<br>(may vary according to applicable regulations) | 25 or 35 kph   |
| <b>Hydraulics</b>   |  |
| Pump  | gear type with priority valve 125 l/min – 270 bar                                |
| <b>Capacities</b>   |  |
| Hydraulic oil   | 125 l  |
| Fuel  | 120 l  |
| <b>Unladen weight (with forks)</b>                                  | 8900 kg  |
| <b>Dimensions</b>   |  |
| 1. Front wheel centre to carriage                                   | 1.60 m   |
| 2. Wheelbase  | 2.88 m   |
| 3. Rear wheel centre to rear face                                   | 0.89 m   |
| 4. Overall length to carriage                                       | 5.37 m   |
| 5. Ground clearance   | 0.42 m   |
| 6. Overall width of cab   | 0.88 m   |
| 7. Inside tyre width  | 1.87m  |
| 8. Overall width  | 2.28 m   |
| 9. Overall width (stabilizers lowered)                              | 2.28 m   |
| 10. Overall height  | 2.42 m   |
| Turning radius (over tyres)   | 3.65 m   |
| Carriage rotation (crowd / dump)                                    | 16° /110°  |
| Standard forks (length x width x thickness)                         | 1200 x 125 x 45 mm   |
| <b>Frame levelling</b>  | in standard  |
| <b>Controls</b>   | JSM *(Multi-function joystick)   |
| <b>Safety</b>   | Load limiter cut off system - EN 15000 norm<br>ROPS / FOPS level II standard cab |
| <b>Noise and vibration</b>  |  |
| Noise at driving position (LpA)                                     | 78 dB  |
| Environmental noise (LwA)   | 103 dB   |
| Vibration to whole hand/arm   | <2.50 m/s <sup>2</sup>   |

**Rough terrain load chart**  
Standard EN 1459B

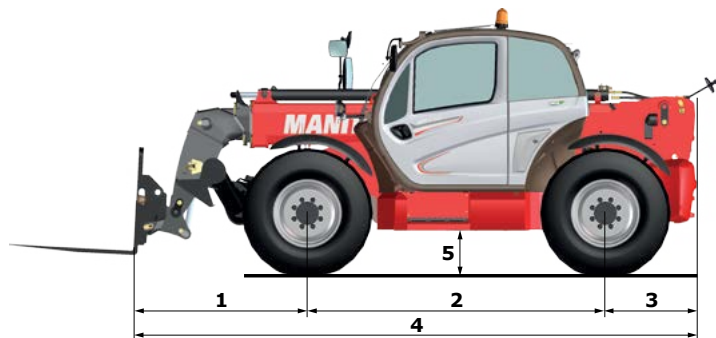
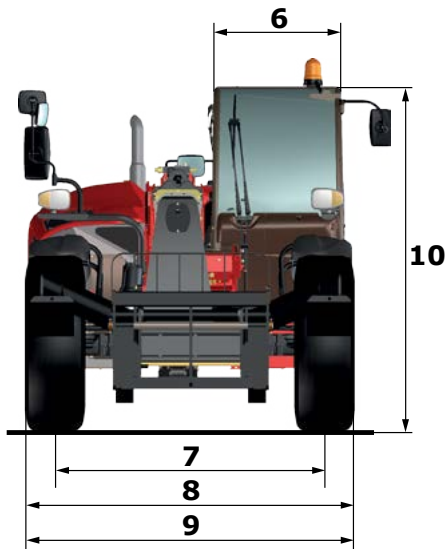
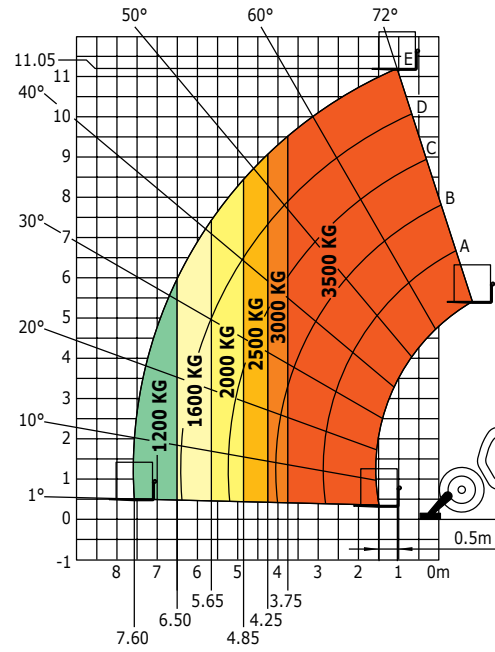
**Machine with forks on tyres**

**CDG 500 mm**  
(with frame levelling)



**Machine with forks on stabilizers**

**CDG 500 mm**



Your MANITOU dealer



Head office :

B.P. 249 - 430 rue de l'Aubinière - 44158 Ancenis Cedex - France

Phone.: +33 (0)2 40 09 10 11 - Fax: +33 (0)2 40 09 10 97

[www.manitou.com](http://www.manitou.com)

