

TECHNICAL DATA SHEET

**MT1440**

**Manitou Telescopic**

*easy*

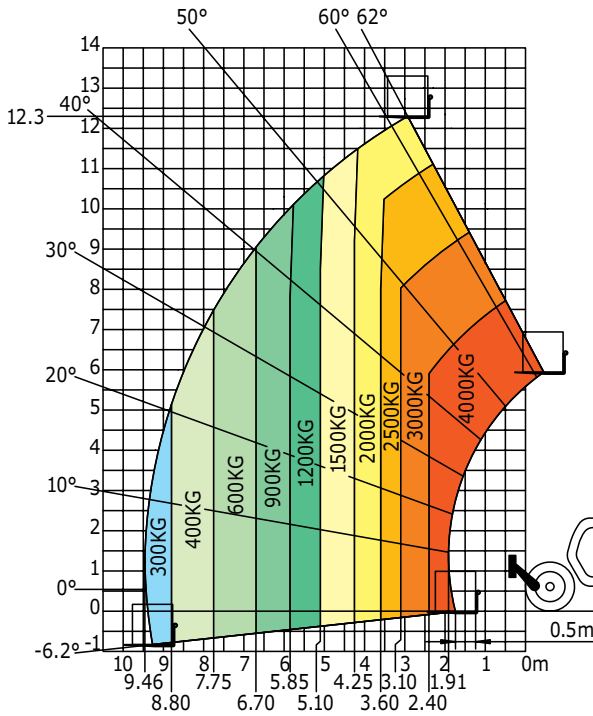


 **MANITOU**  
HANDLING YOUR WORLD

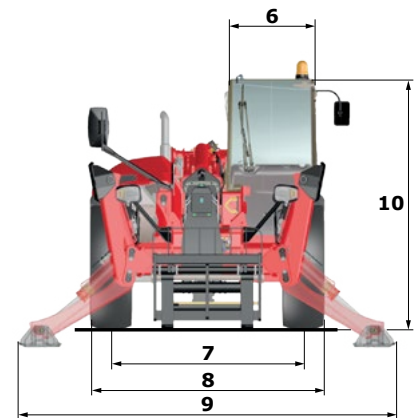
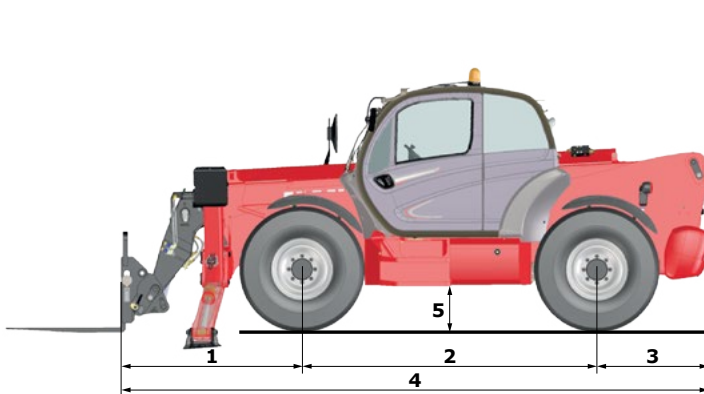
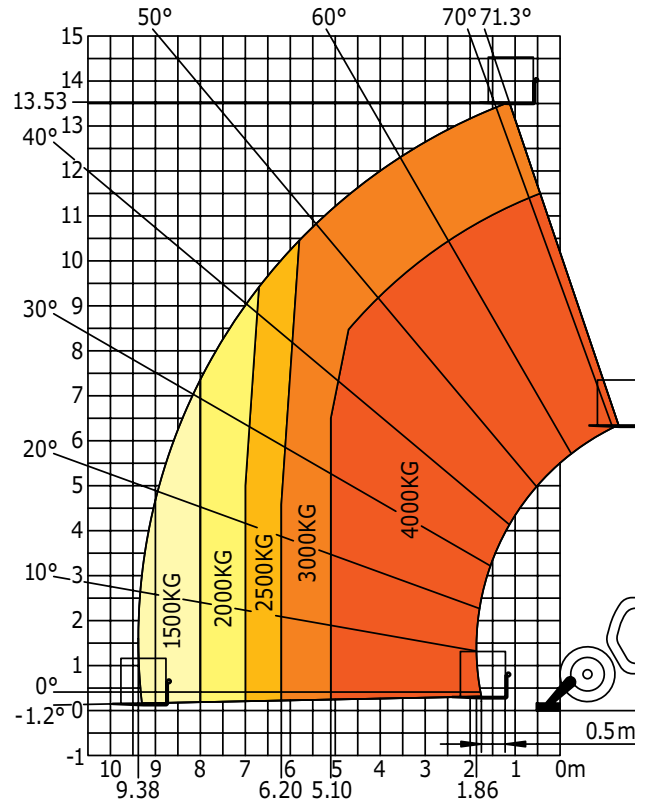
| MT 1440 easy   |   |
|--|---|
| <b>Lifting</b>   |   |
| Max. capacity  | 4000 kg   |
| Max. lifting height  | 13.53 m   |
| Max. outreach  | 9.46 m  |
| Break-out force with bucket (ISO 8313)   | 8150 daN  |
| <b>Unladen time</b>  |   |
| Lifting  | 16s   |
| Lowering   | 12 s  |
| Extension  | 17s   |
| Retraction   | 13s   |
| Crowd  | 4.0 s   |
| Dump   | 4.0 s   |
| <b>Tyres</b>   | 400 / 80 -24  |
| <b>Braking</b>   |   |
| Service brake  | oil immersed multi-disc braking on front / rear axles |
| Parking brake  | automatic negative parking brake                      |
| <b>Engine</b>  |   |
| DEUTZ - STAGE 3B - FINAL TIER 4  |   |
| Type   | TD 3.6 L  |
| Cubic capacity   | 3621 cm <sup>3</sup>                                  |
| Power  | 75 hp/55.4 kW   |
| Max torque   | 330 Nm  |
| Injection  | direct  |
| Cooling  | water   |
| Laden drawbar pull   | 8500 daN  |
| <b>Transmission</b>  |   |
| torque converter   |   |
| Reversing shift  | electrohydraulic control                              |
| Number of gears (forward/reverse)  | 4/4   |
| Drive wheels   | 4 wheel drive   |
| Steering mode  | 4 wheel steer - 3 steering modes                      |
| Max. travel speed<br>(may vary according to applicable regulations)              | 25 kph  |
| <b>Hydraulics</b>  |   |
| Pump   | gear type with flow splitter 170 l/min – 270 bar      |
| <b>Capacities</b>  |   |
| Hydraulic oil  | 135 l   |
| Fuel   | 140 l   |
| <b>Unladen weight (with forks)</b>   | 10 900 kg   |
| <b>Dimensions</b>  |   |
| 1. Front wheel centre to carriage  | 1.90 m  |
| 2. Wheelbase   | 3.07 m  |
| 3. Rear wheel centre to rear face  | 1.16 m  |
| 4 Overall length to carriage   | 6.13 m  |
| 5. Ground clearance  | 0.37 m  |
| 6. Overall width of cab  | 0.89 m  |
| 7. Inside tyre width   | 1.96 m  |
| 8. Overall width   | 2.37 m  |
| 9. Overall width (stabilizers lowered)   | 3.79 m  |
| 10. Overall height   | 2.45 m  |
| Turning radius (over tyres)  | 3.97 m  |
| Carriage rotation (crowd / dump)   | 12° /114°   |
| Standard forks (length x width x thickness)                                      | 1200 x 125 x 50 mm                                    |
| <b>Frame levelling</b>   | in option   |
| <b>Controls</b>  |   |
| JSM <sup>®</sup> (Multi-function joystick)                                       |   |
| <b>Safety</b>  |   |
| Load limiter cut off system - EN 15000 norm<br>ROPS / FOPS level II standard cab |   |
| <b>Noise and vibration</b>   |   |
| Noise at driving position (LpA)  | 78 dB   |
| Environmental noise (LwA)  | 103 dB  |
| Vibration to whole hand/arm  | <2.50 m/s <sup>2</sup>                                |

**Rough terrain load chart**  
Standard EN1459 B

**Machine on tyres with forks**  
**LC 500 mm**  
(with frame levelling)



**Machine on stabilizers with forks**  
**LC 500 mm**



Your MANITOU dealer



Head office :  
B.P. 249 - 430 rue de l'Aubinière - 44158 Ancenis Cedex - France  
Phone.: +33 (0)2 40 09 10 11 - Fax: +33 (0)2 40 09 10 97  
[www.manitou.com](http://www.manitou.com)

