

MLT 629

TECHNICAL DATA SHEET



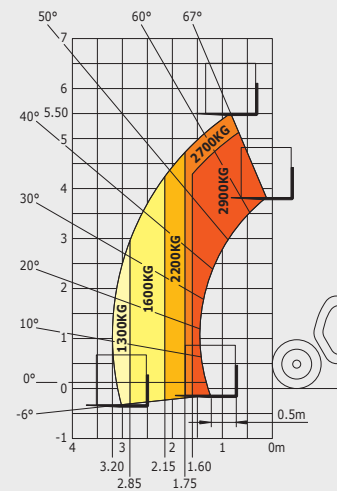
MLT 629

MLT 629 20"/20" C MLT 629 24"

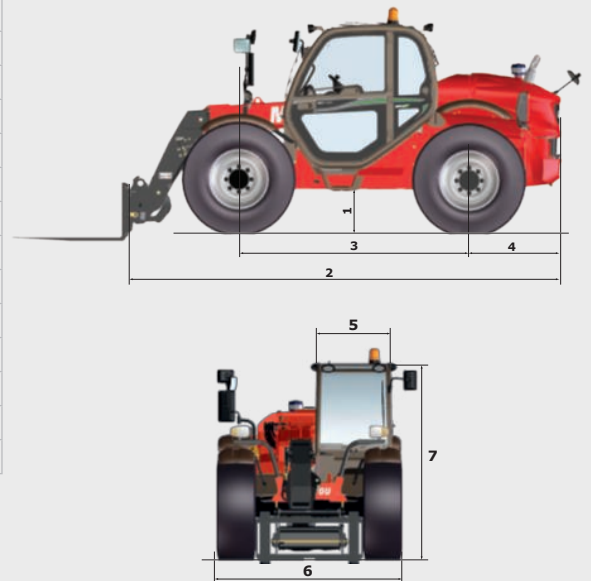
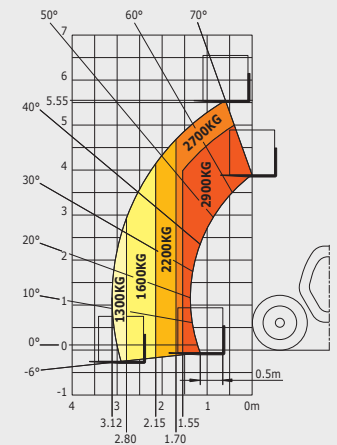
| | | MLT 629 20"/20" C | MLT 629 24" |
|---|--|------------------------------------|-------------|
| Lifting | | | |
| Max. capacity | | 2900 kg | |
| Max. lifting height | | 5.5 m | 5.55 m |
| Max. outreach | | 3.2 m | 3.12 m |
| Reach at max. height | | 0.9 m | 0.75 m |
| Break-out force with bucket | | 4160 daN | |
| Unladen time | | | |
| Lifting | | 7.71 secs | 8.14 secs |
| Lowering | | 5.66 secs | 5.65 secs |
| Extension | | 5.67 secs | 5.63 secs |
| Retraction | | 3.5 secs | 3.87 secs |
| Crowd | | 3.66 secs | |
| Dump | | 3.47 secs | |
| Tyres | | 400/70 R 20 | 460/70 R 24 |
| Braking | | | |
| Service brake | | hydraulic oil-immersed multi-disc | |
| Parking brake | | mechanical oil-immersed multi-disc | |
| Engine | | | |
| | | PERKINS - STAGE 3B | |
| Type | | 854E-34TA | |
| Cubic capacity | | 3400 cm ³ | |
| Power | | 102 HP/75 kW TURBO | |
| Max. torque | | 420 Nm - 1400 rpm | |
| Injection | | direct | |
| Cooling | | water + air | |
| Laden drawbar pull | | 7100 daN | |
| Transmission | | | |
| Gearbox | | torque converter | |
| Reversing shift | | electrohydraulic control | |
| Number of gears (forward/reverse) | | 4/4 | |
| Max. travel speed (may vary according to applicable regulations) | | 28 kph | 32 kph |
| Hydraulics | | | |
| Pump | | gear type 85 l/min - 260 bar | |
| Capacities | | | |
| Hydraulic oil | | 98 l | |
| Fuel | | 104 l | |
| Unladen weight (with forks) | | 6025 kg | 6225 kg |
| Dimensions | | | |
| 1. Ground clearance | | 0.40 m | 0.49 m |
| 2. Overall length to carriage | | 4.83 m | |
| 3. Wheelbase | | 2.52 m | |
| 4. Rear wheel centre to rear face | | 1.01 m | |
| 5. Overall width of cab | | 0.86 m | |
| 6. Overall width | | 2.00 m | 2.16 m |
| 7. Overall height | | 2.21 m / 2.06 m | 2.30 m |
| Standard forks (length x width x thickness) | | 1200 x 125 x 45 mm | |
| Turning radius (over tyres) | | 3.58 m | 3.62 m |

Rough Terrain Load Chart standard EN1459 B

Machine on tyres 20" with forks



Machine on tyres 24" with forks



This brochure describes versions and configuration options for MANITOU products which may be fitted with different equipment. The equipment described in this brochure may be standard, optional or not available depending on version. MANITOU reserves the right to change the specifications shown and described at any time and without prior warning. The manufacturer is not liable for the specifications given. For more information, contact your MANITOU dealer. Non-contractual document. Product descriptions may differ from actual products. List of specifications is not comprehensive. The logos and visual identity of the company are the property of MANITOU and may not be used without authorisation. All rights reserved. The photos and diagrams contained in this brochure are provided for information only.

MANITOU BF SA - Limited company with board of directors - Share capital: 39,547,824 euros - 857 802 508 RCS Nantes

